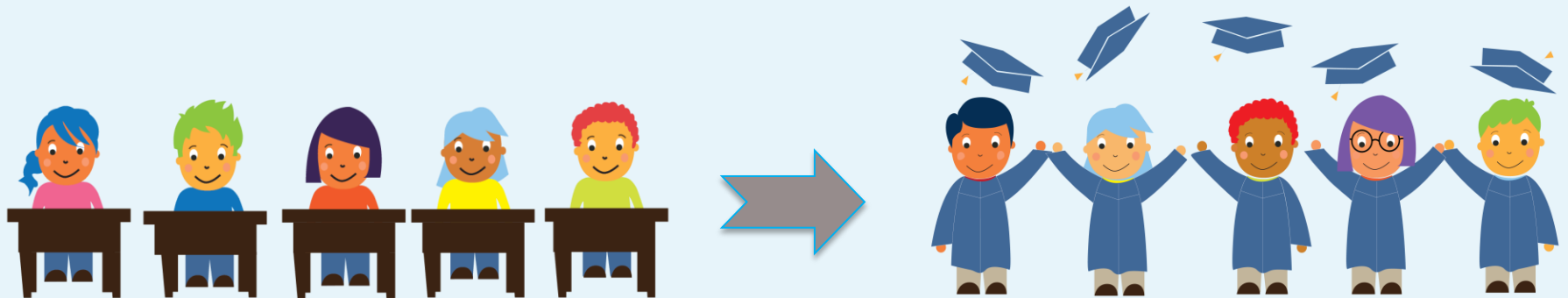


Mapping the Early Attendance Gap



Welcome!



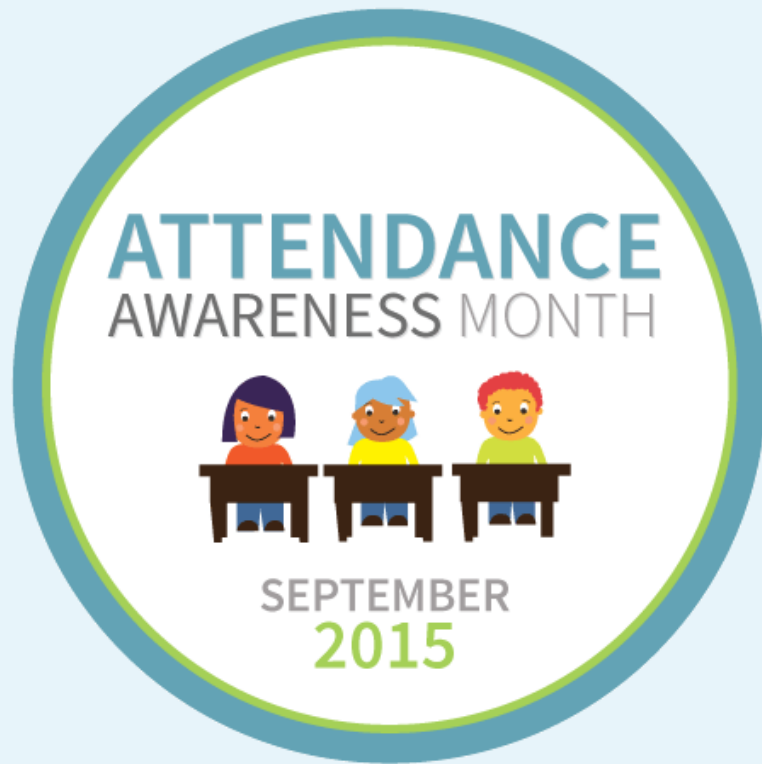
Eric Glaser

Director

U.S. Network Impact

United Way Worldwide





Attendance Awareness Month and Nationwide Campaign 2015



America's Promise Alliance

Brittany Moore

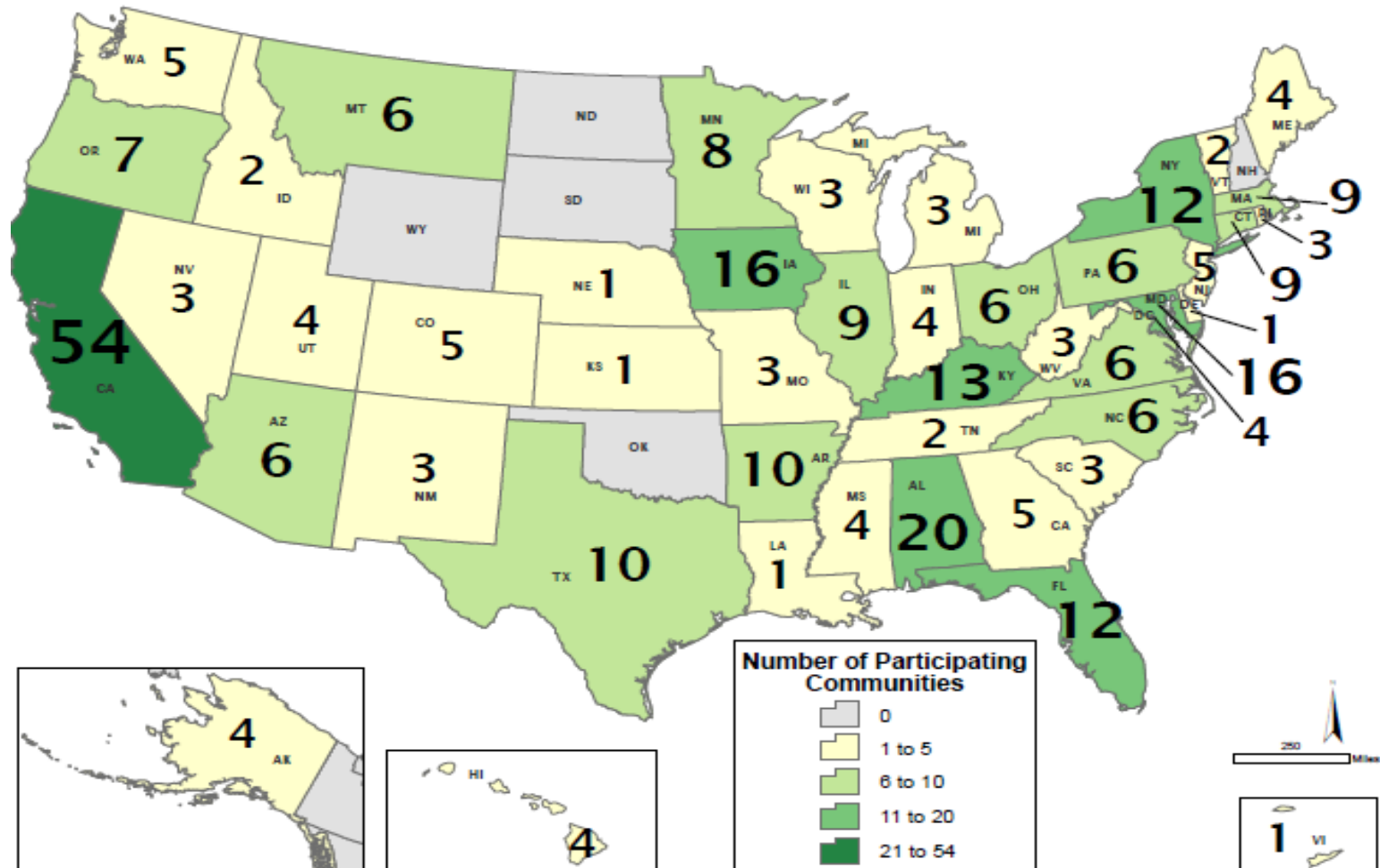
*Manager
Alliance Engagement*



Raising Awareness in 2014:

324 Communities in 45 States

Participation in Attendance Awareness Month



Building Momentum in 2015



- **56** national partners
- **4,200** signed up for updates
- **73,000** hits on Attendance Awareness Month website
- **285** pins already on the Attendance Action Map

What are you planning in 2015?

Post your community's plans for Attendance Awareness Month 2015 on our map!



<http://awareness.attendanceworks.org/map/>



Attendance Works



Hedy Chang

Director



Phyllis Jordan

Communications Director



Your Community's Participation

Poll Questions:

1. Is your community planning to participate in Attendance Awareness Month 2015?



Agenda

1. Overview ~ Hedy Chang

2. Mapping the Early Attendance Gap

Hedy Chang and Phyllis Jordan

3. Health and Absenteeism

Mark Bishop, Healthy Schools Campaign

4. Panel Discussion ~ What Can States Do

California, Rhode Island, and Utah

5. Resources and Announcements



Attendance is an Essential Ingredient of Academic Success



Developed by Annie E. Casey Foundation & America's Promise Alliance
For more info go to <http://www.americaspromise.org/parent-engagement-toolkit>



Improving Attendance Matters Because It Reflects:

Exposure to language: Starting in Pre-K, attendance equals exposure to language-rich environments especially for low-income children.

Time on Task in Class: Students only benefit from classroom instruction if they are in class.

On Track for Success: Chronic absence in preK, K and 1st is a proven early warning sign that a student will fall behind in reading by 3rd grade. By middle and high school it predicts failing course and dropping-out.

College Readiness: Attendance patterns predicts college enrollment and persistence.

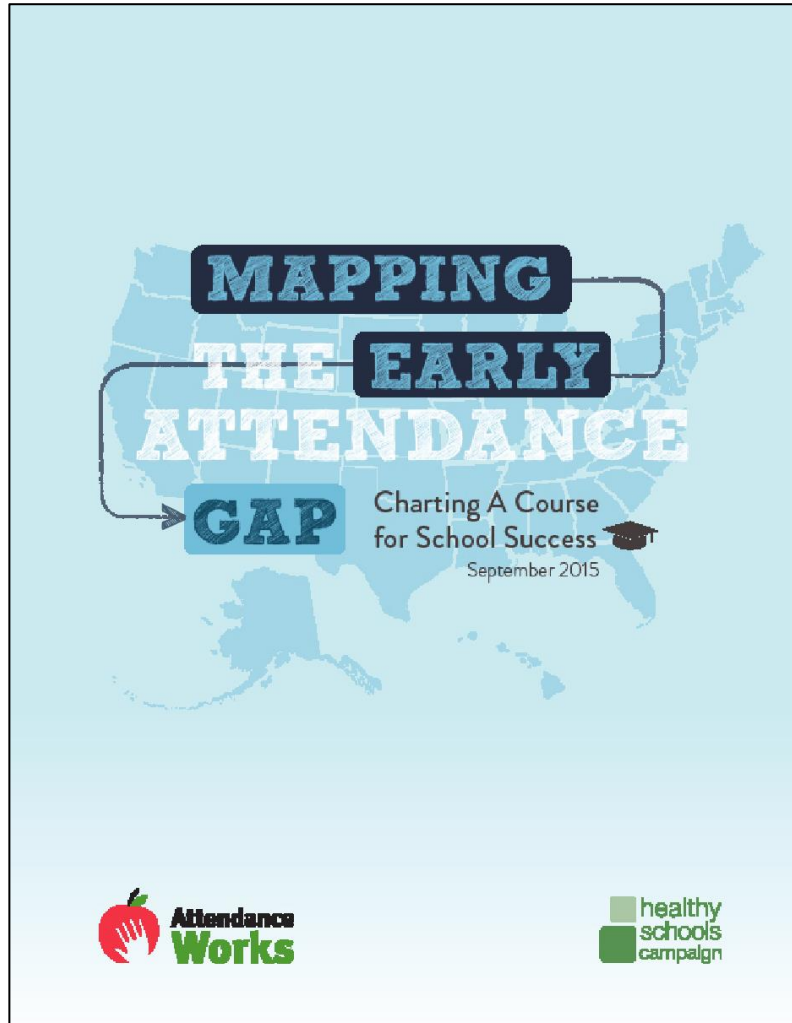
Engagement : Attendance reflects engagement in learning.

Effective Practice: Schools, communities and families can improve attendance when they work together.

(For research, see: <http://www.attendanceworks.org/research/>)



Mapping the Early Attendance Gap



Released September 1st

Widespread Media coverage including:

- Washington Post
- NPR
- The Atlantic
- St. Louis Post-Dispatch
- Atlanta Journal-Constitution

Mapping the Early Attendance Gap: *An Overview*



WHAT:

Chronic absence is a hidden national crisis



WHEN:

Chronic absence starts early



WHY:

Health plays a key role in absenteeism



WHO:

Low-income students, students of color and students with disabilities most affected



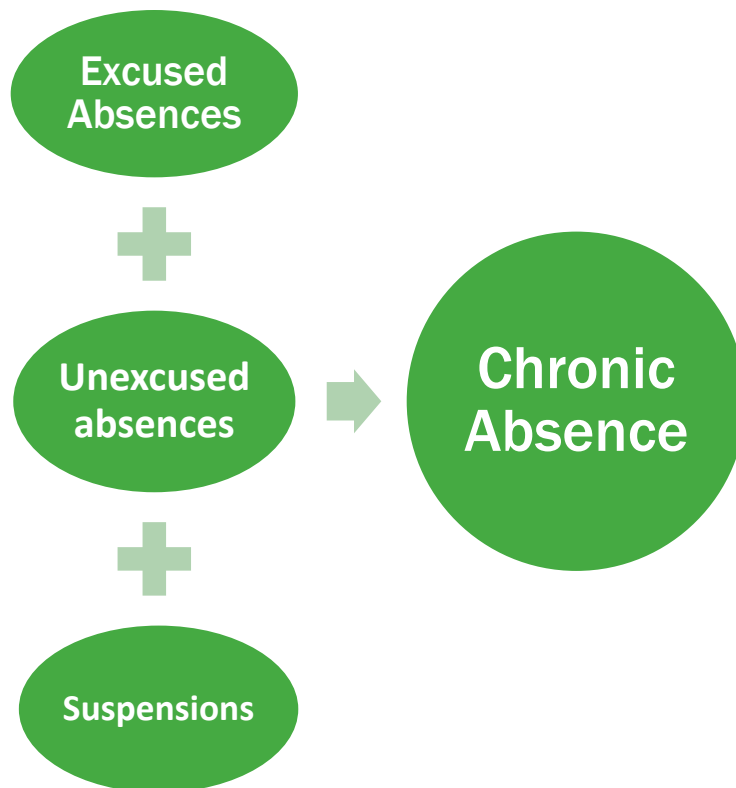
HOW:

A five-step approach that includes mapping where chronic absence exists



What is Chronic Absence?

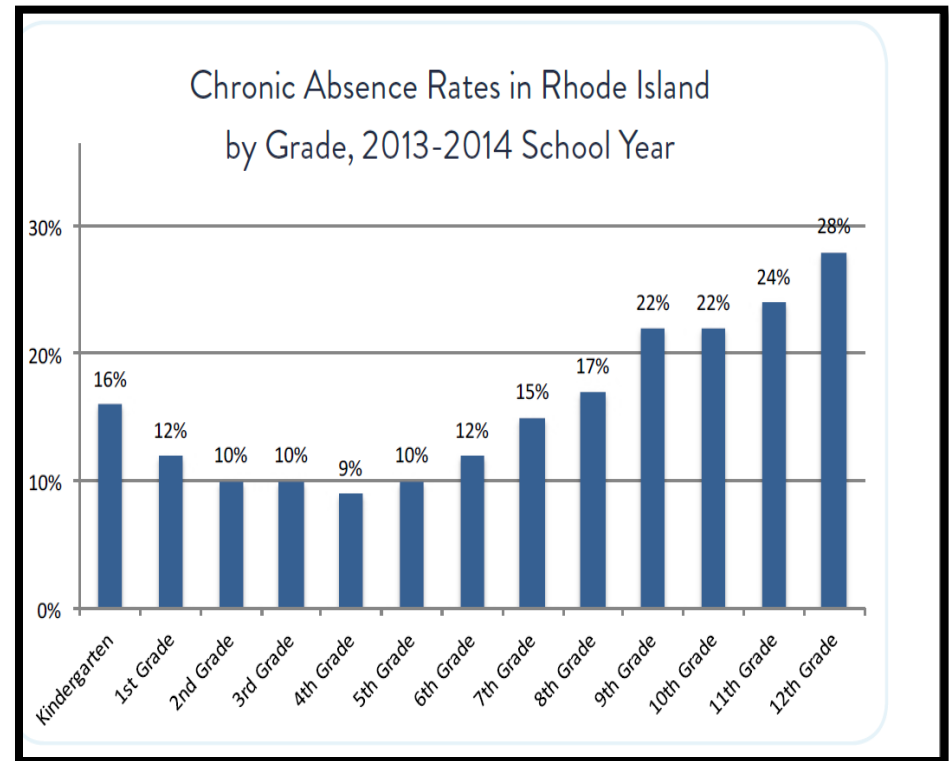
Chronic absence = missing too much school for any reason.
Researchers often use **missing 10% or more of school days**



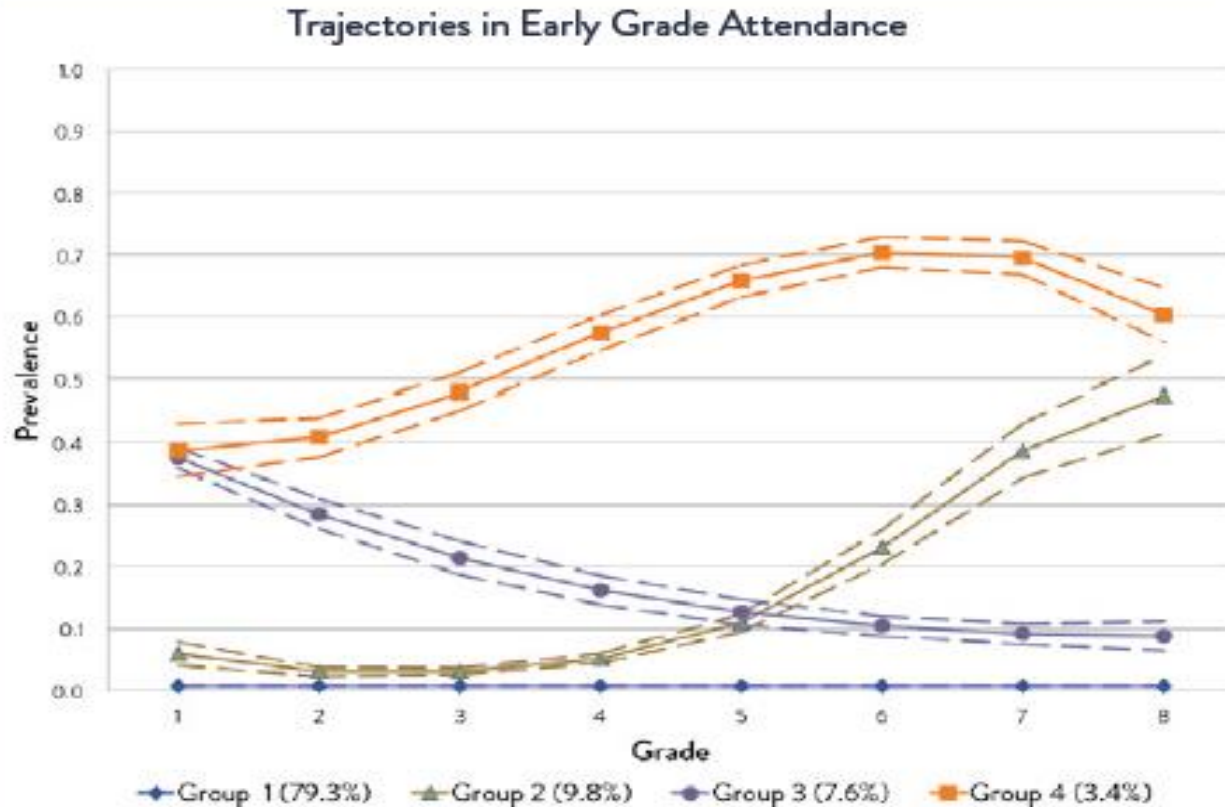
Chronic absence is different from truancy (unexcused absences only) or average daily attendance (how many students show up to school each day).

When Does Chronic Absence Occur?

- Our youngest students are nearly as likely to be absent as teenagers.
- Chronic absence is a challenge as early as K and even preschool.



Trajectories in Early Attendance



- ◆ = < 5% dropout rate
- ▲ = 25% dropout rate
- = 11% dropout rate
- = 21% dropout rate

Source: Schoeneberger, Jason A., *Longitudinal Attendance Patterns: Developing High School Dropouts*, The Clearing House: A Journal of Educational Strategies, Issues and Ideas, 85:1, 7-14, November 2011



Who is Most Affected?

(NAEP data)

- **Low-income students** have higher rates of absenteeism in every state
- **American Indians** have the highest rates of all racial/ethnic groups
- **Black children** have higher rates than white students, particularly in some states
- **Hispanic students** have higher rates than white students particularly in some states
- **Students with disabilities** have significantly higher rates than others.

Chronic Absence in Your Community

Poll Questions:

2. What is the primary reason young children miss school in your community?

Why Are Students Missing School?

Myths

Absences are only a problem if they are unexcused

Sporadic versus consecutive absences aren't a problem

Attendance only matters in the older grades

Barriers

Chronic disease

Lack of access to health or dental care

Poor Transportation

Trauma

No safe path to school

Aversion

Child struggling academically

Lack of engaging instruction

Poor school climate and ineffective school discipline

Parents had negative school experience



Healthy Schools Campaign



Mark Bishop

*Vice President of
Policy*

Healthy Schools Campaign



Health and Absenteeism



Leading Health Related Causes

Asthma

Nearly one in ten children age 4-14 are diagnosed with asthma, accounting for one-third of all days of missed instruction.

Oral Health

Children miss nearly two million school days due to oral health issues every year.

Leading Health Related Causes

Asthma

Bullying

Oral Health

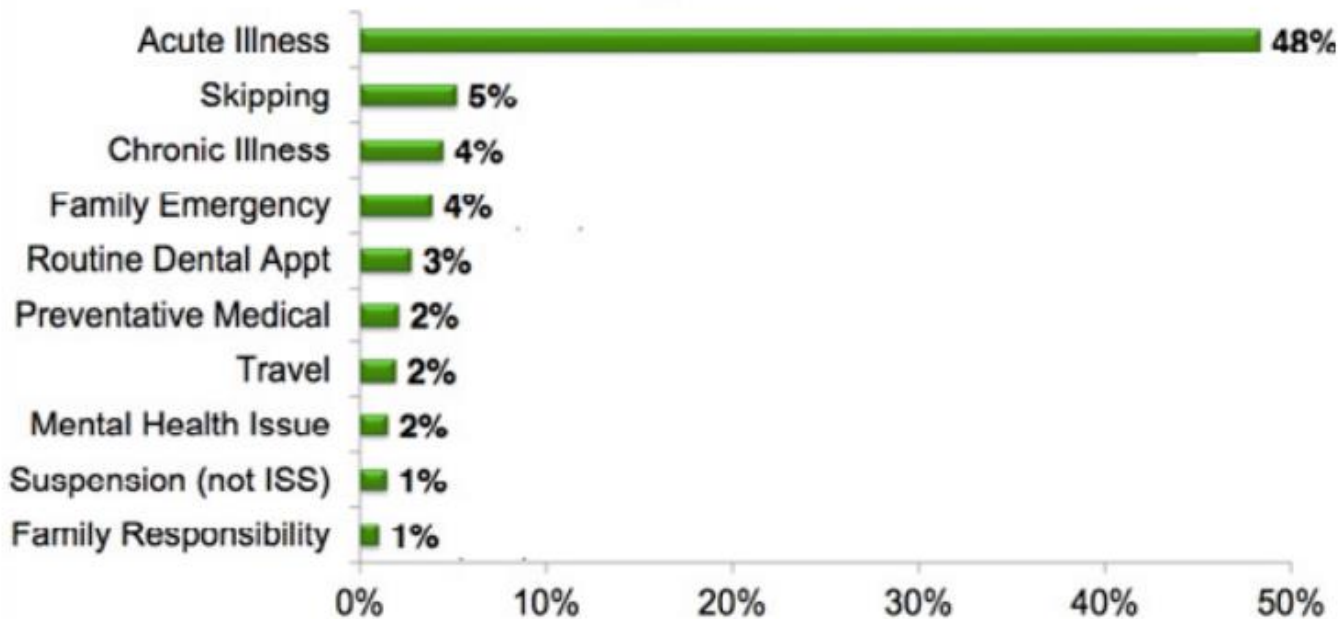
Mental
Health

Nutrition

Vision

Your School Matters

Why Do Students in Central Texas Miss School?



Source: E3 Alliance analysis of absence data
from 9 schools in PISD & HCISD, 1/14/13-3/8/13

© 2015 E3 Alliance

Health Interventions

Asthma

- Asthma friendly schools
- Environmental assessments
- Asthma friendly homes

Oral Health

- Community-based oral health programs
- School-based sealant programs
- Mobile clinics

Nutrition

- Community eligibility
- Universal breakfast
- Food backpack programs
- Farm to school programs

Bullying

- Safe Routes to Schools
- Bullying education programs
- Support groups

Vision

- School-based vision screening programs

Mental Health

- School-based mental health programs
- Universal interventions
- Screening, Brief Intervention and Referral to Treatment

Schools Can't Do it Alone



Questions?





HOW:

A Five-Step Approach for Closing Attendance Gaps

Charting a course for school success



1

Make the case
for why it
matters

2

Map chronic
early
absence

3

Engage partners
in unpacking
why it
occurs

4

Learn from
positive
outliers

5

Embed
action into
existing activities



Make the case that chronic early absence matters



Inspiring action starts with being able to make the case to key stakeholders that chronic early absence is a concern. That requires obtaining the data to show impact and scale, and engaging champions to spread the word.



Map chronic early absence



Break down data to show chronic absence rates by grade, district school, student population, even classroom. Equipped with this information, states and districts can direct resources to places with the highest rates of absenteeism.



Engage partners in unpacking why early absences occur



Creating effective solutions requires engaging partners in unearthing the reasons for absenteeism. Pay particular attention to health-related causes of absence and the power of health partners to understand why students miss school.



Learn from positive outliers



There are always schools and districts that are beating the odds, improving or maintaining high levels of attendance despite challenging conditions. States can use data to identify these places and figure out what strategies are working for them.



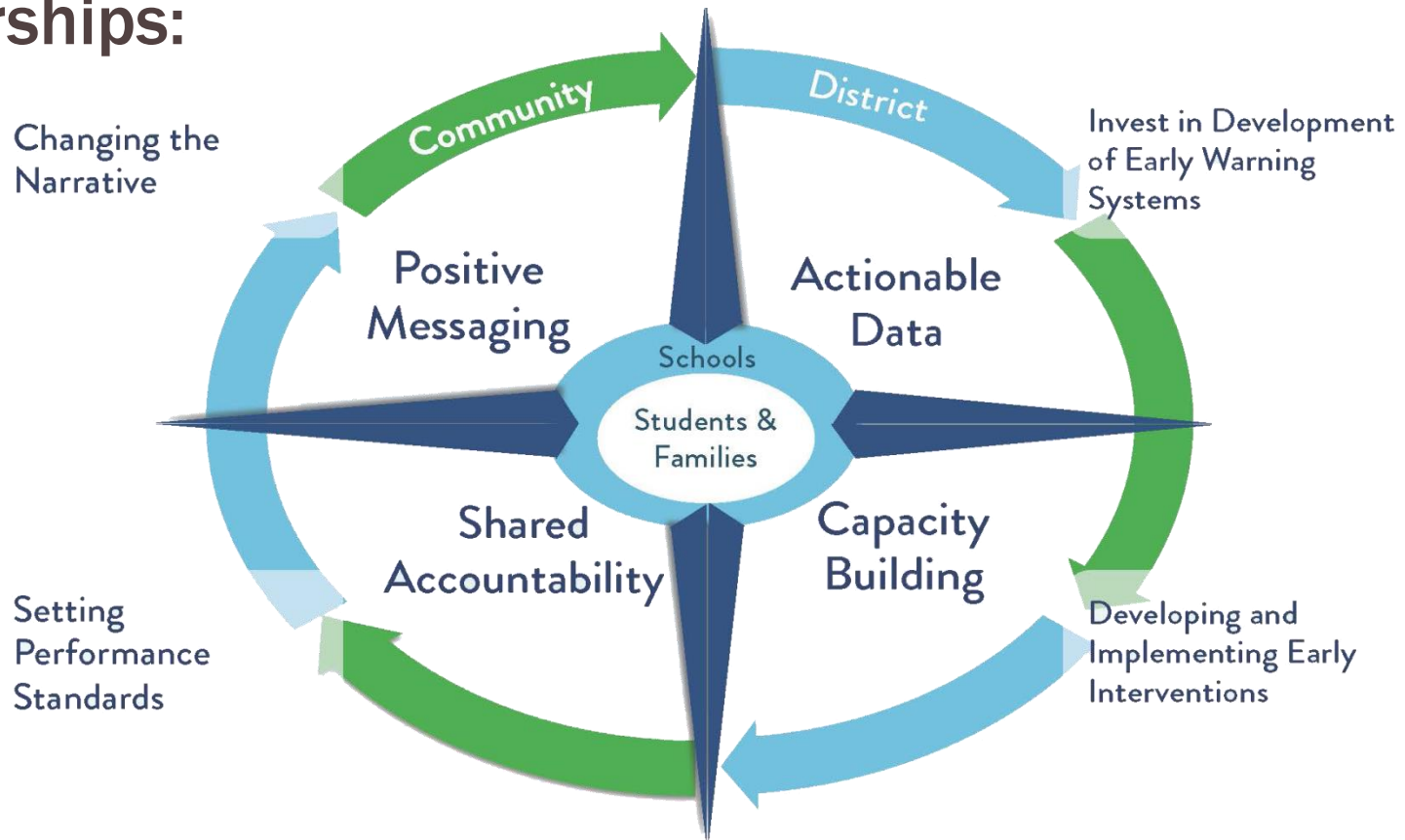
Embed action into existing activities



Too often, something that requires new organization or infrastructure simply does not get done. States are finding ways to integrate chronic absence into tiered systems of support, school climate indices, third grade reading initiatives, school improvement planning and community partnerships.

What helps states take action?

Working across sectors and at multiple levels to promote these key ingredients through strong community/school partnerships:



Panel Moderator

Yolie Flores

*Senior Fellow
Campaign for
Grade-Level Reading*



State of California



Gordon Jackson

Director

*Coordinated Student Support Division,
California Department of Education*



Jill Habig

Special Assistant

*Attorney General for
California Attorney General
Kamala Harris*

State of Rhode Island



Sharon Lee

Director

*Office of Multiple Pathways
Rhode Island Department of
Education*



Rebecca Boxx

Director

*Providence Children and Youth Cabinet
Annenberg Institute for School Reform
Brown University*

State of Utah



Terry Haven
Deputy Director
Voices for Utah Children



Lisa Wisham
Education Specialist
*21st Century Community Learning
Centers, Utah State Department of
Education*

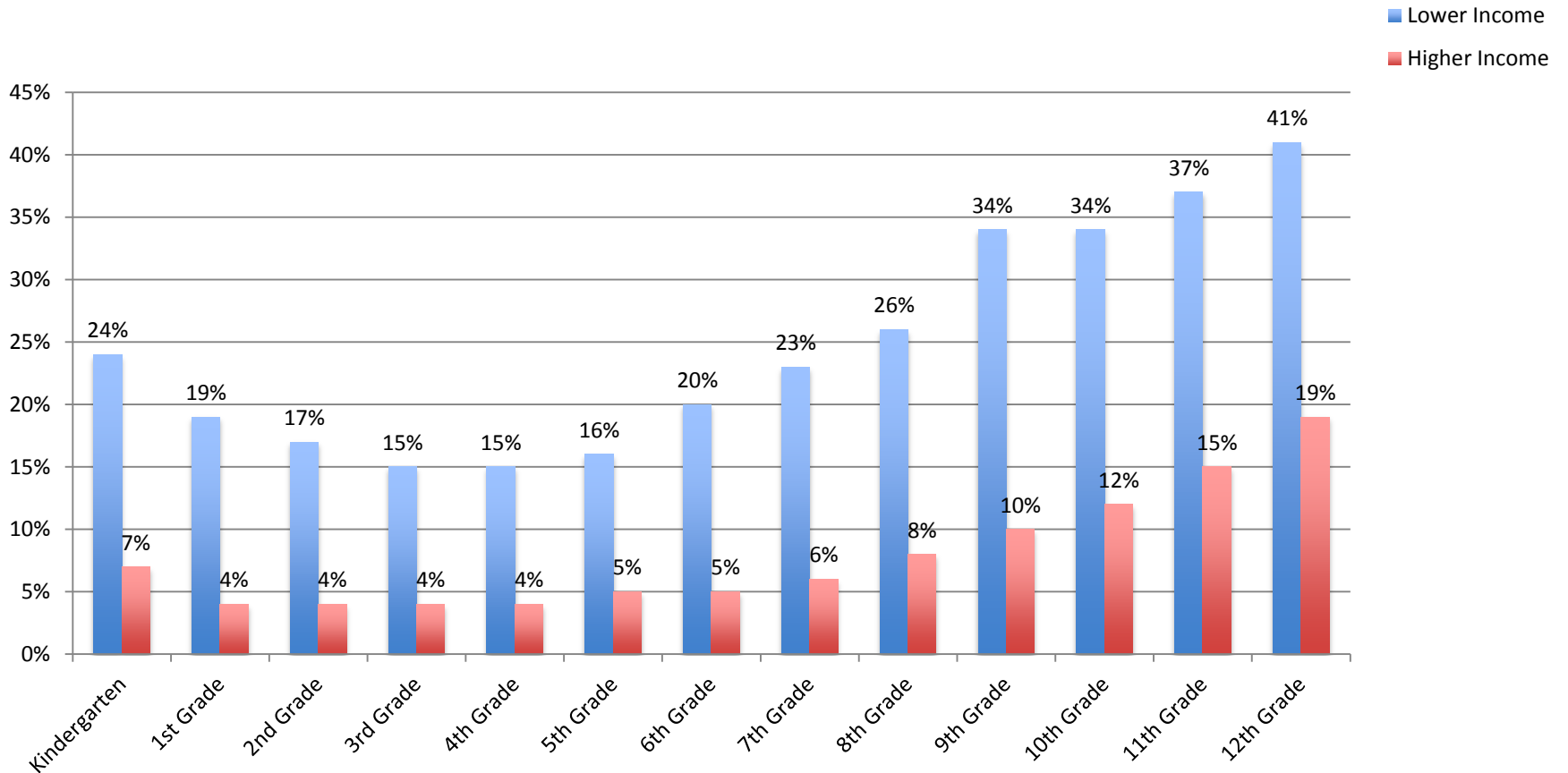


Susan Loving
Transition Specialist,
*Utah State Department of
Education*

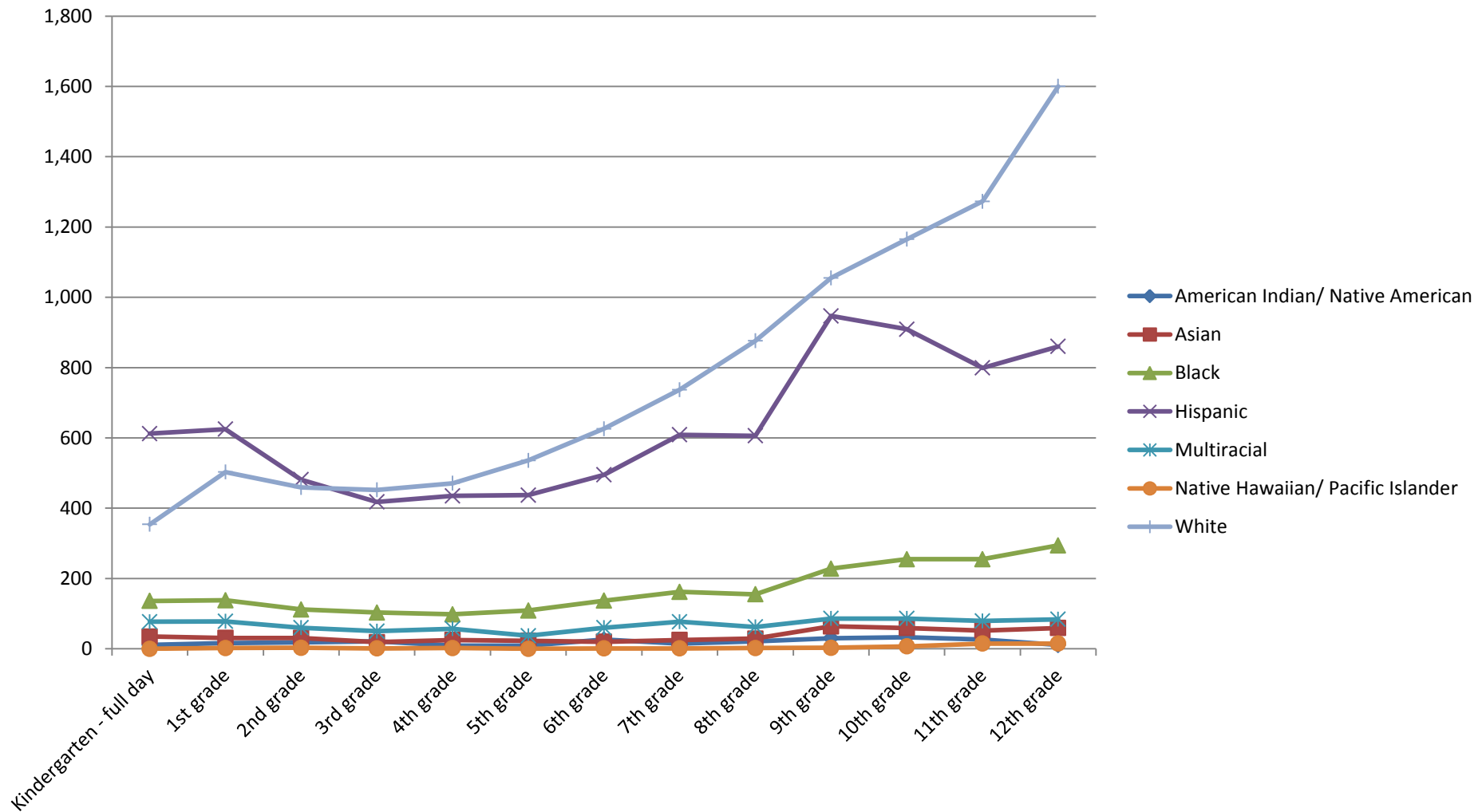
Discussion Questions

- Who were the initial champions in your state that made the case that chronic early absence matters?
- What has the data on chronic absence told you about where the attendance gaps are in your state?

Rhode Island Chronic Absence Rates by Income Level

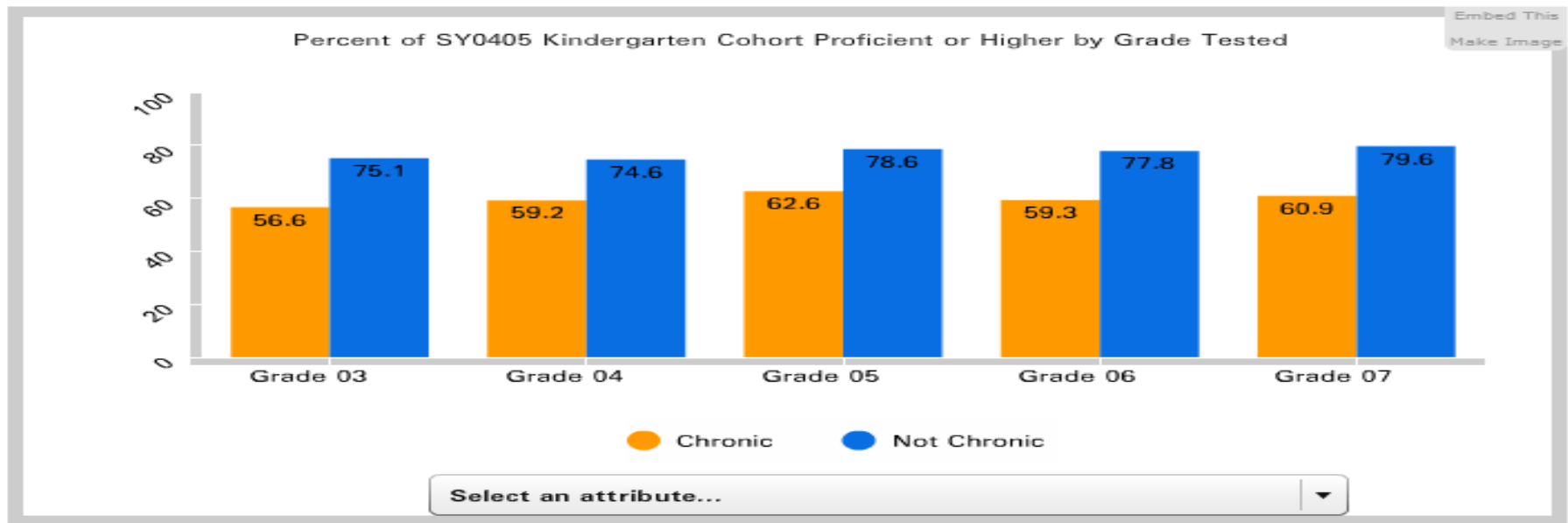


Rhode Island Chronic Absence Counts by Grade and Race/Ethnicity



Insights from Rhode Island on Kindergarten Absenteeism

(Source: Rhode Island Data HUB)



Compared with kindergartners who attend regularly, those chronically absent

- **Were 20% less likely to be proficient in reading and math in subsequent grades; gap grows**
- **2X as likely to be retained in grade.**
- **2X likely to be suspended by the end of 7th grade.**
- **Likely to continue being chronically absent.**

Utah Education Policy Center

Chronic Absenteeism in Utah



THE UNIVERSITY OF UTAH

**UTAH EDUCATION
POLICY CENTER**

*Bridging Research, Policy,
and Practice*

1901 E. South Campus Drive
Salt Lake City, Utah 84112
<http://uepc.ed.utah.edu/>

Predictors of Chronic Absenteeism

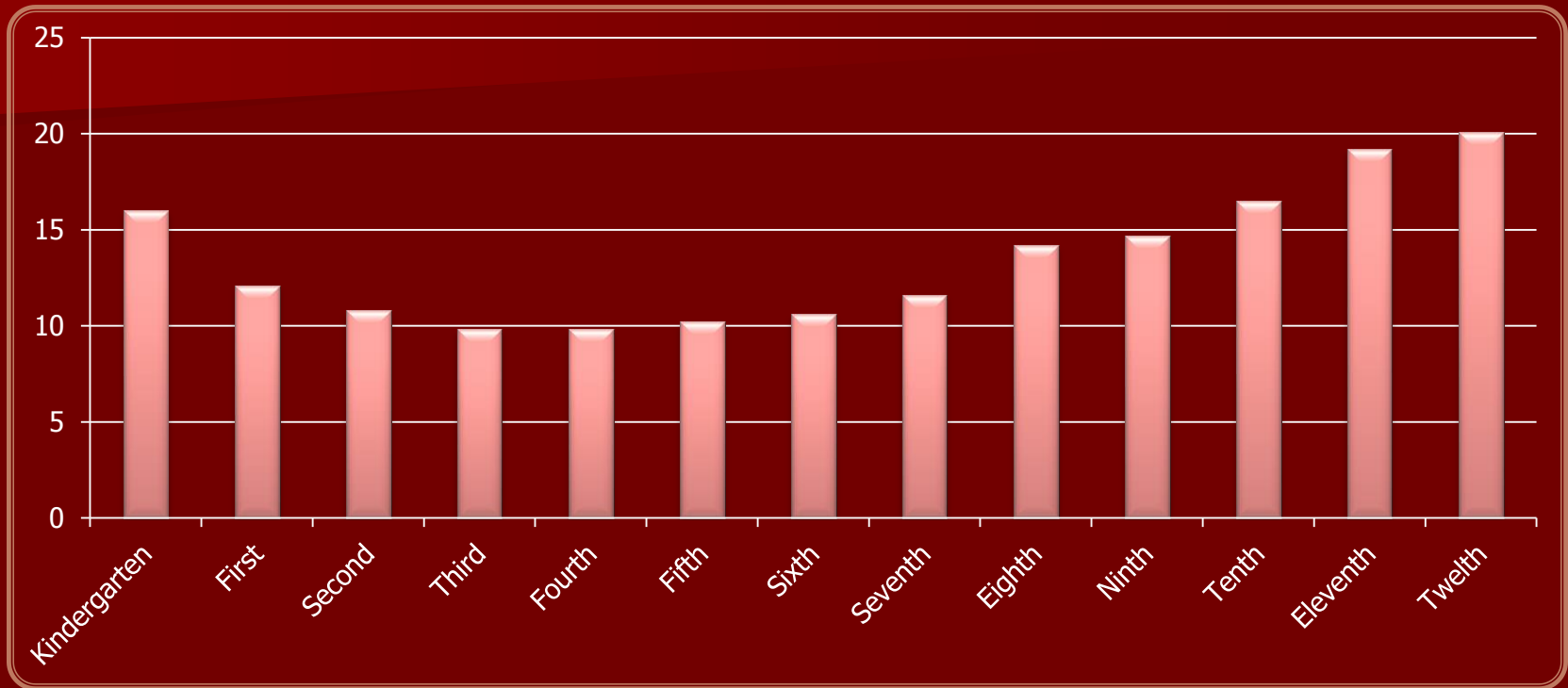


Figure 2. Proportion of Chronically Absent Students by Year in School

The grade of the student was related to chronic absenteeism.
The general U-shaped trend is typical of what is seen in other states.

Covariates of Chronic Absenteeism

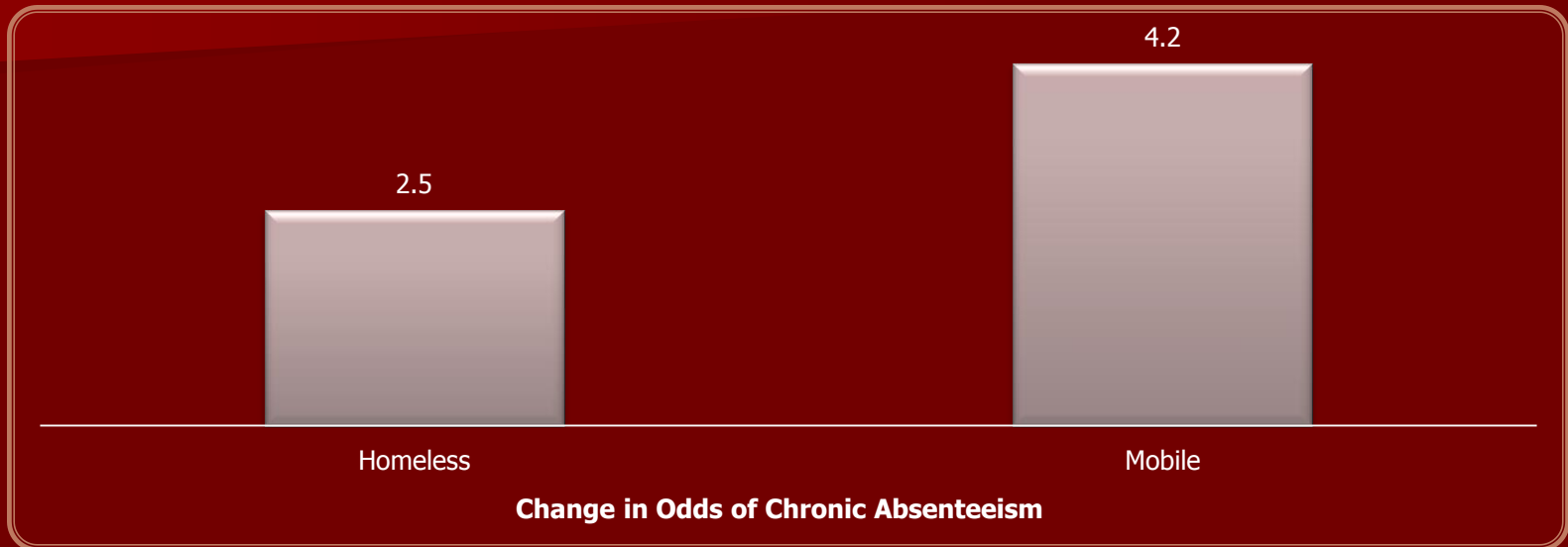


Figure 3. Change in Odds Associated with the Covariates of Mobility and Homelessness

Students who were homeless in 2010-2011 were 2.5 times more likely to be chronically absent than students who weren't homeless, and students who checked out of one school and into another during the 2010-2011 year were 4.2 times more likely to be chronically absent.

Covariates of Chronic Absenteeism

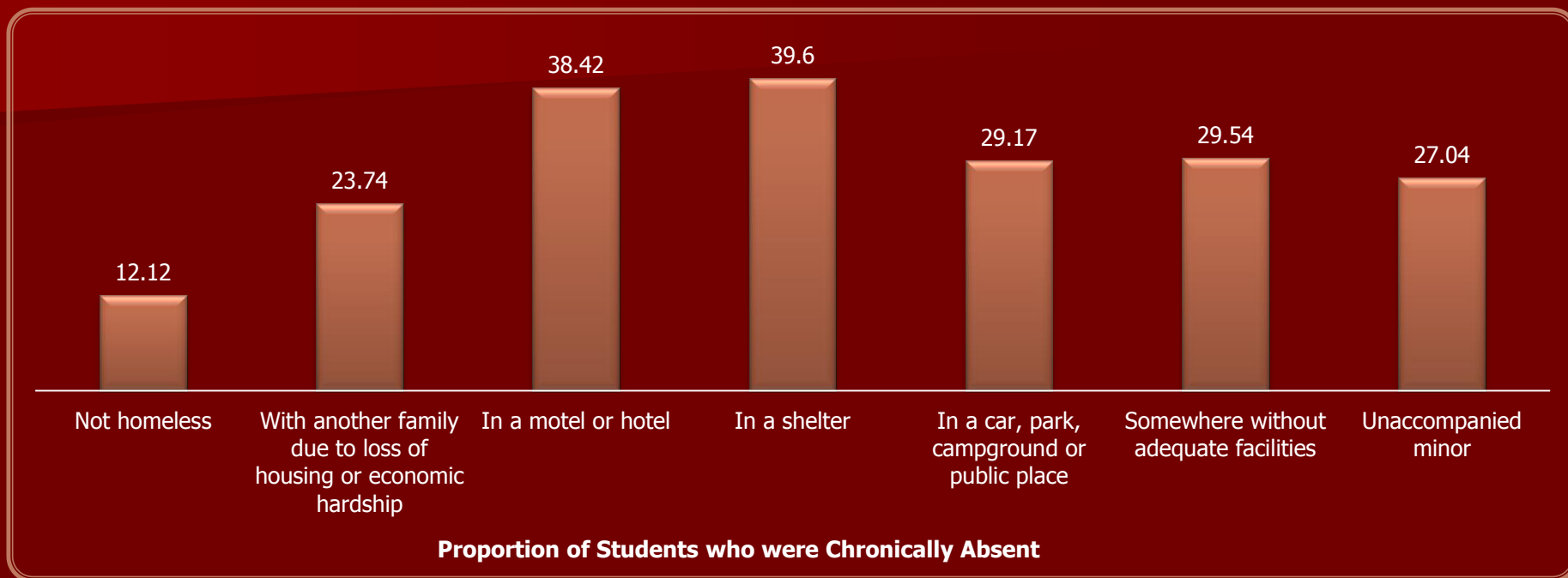


Figure 4. Proportion of Students from Each Homelessness Category who were Chronically Absent

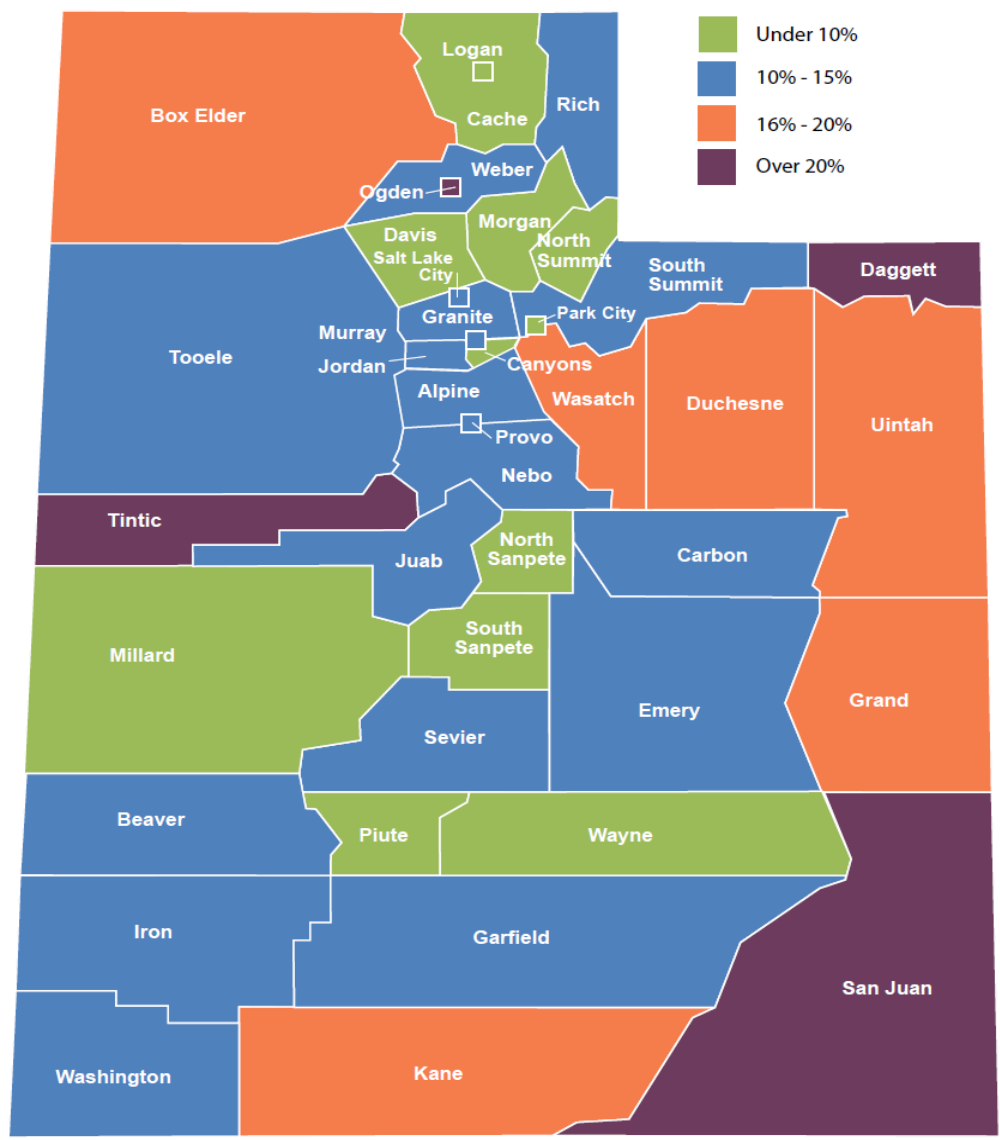
This graph of proportion of chronically absent students by homeless category shows that students in shelters or living in motels had extremely high incidence of chronic absenteeism.

Elementary chronic absence is a statewide challenge with some communities affected more than others

(Voices for Utah Children)

In Utah, 12% (36,638) of elementary students are chronically absent

Utah Elementary Schools by School District, Percent of Students Chronically Absent, 2013



IN SCHOOL + ON TRACK 2014

California's Elementary
School Truancy & Chronic
Absence Crisis



What We Can Do
To Solve it



#EveryKidCounts

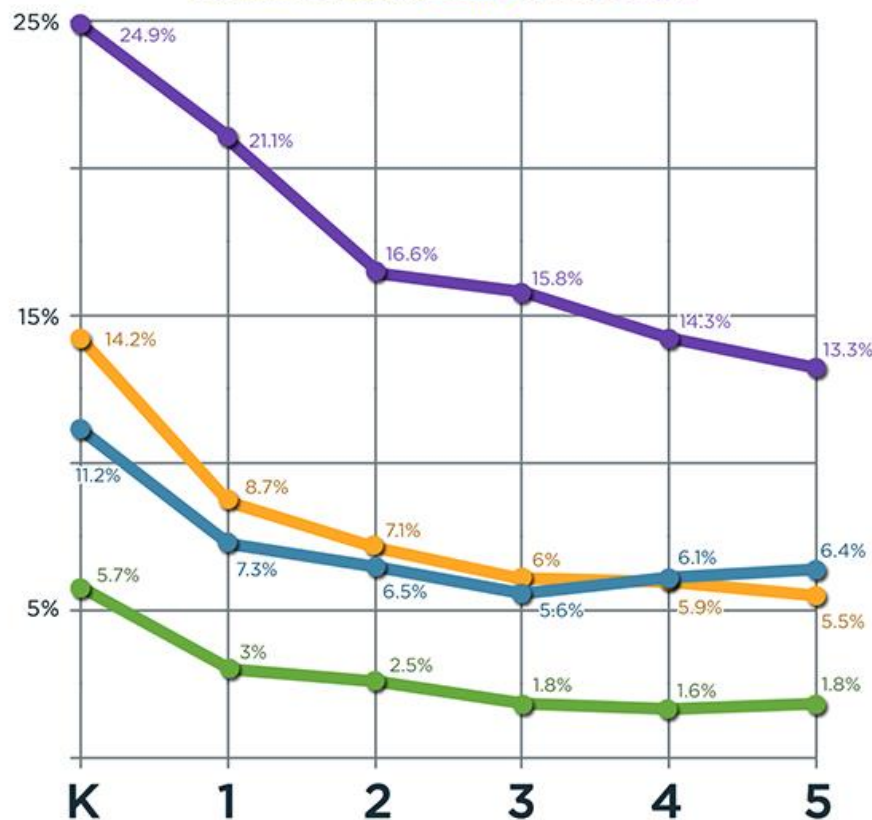


In California, Disadvantaged Youth Suffer Greater Disparities

Chronic Absence Rates

Broken Down by Race and Grade

African-American | Latino | White | Asian



Almost **90%**
of students with
severe attendance
problems are
low-income.



TAKEAWAYS

- 250,000 CA elementary students at risk of falling behind due to poor attendance.
- African American elementary students suffer biggest attendance disparities.
- Absenteeism is worst in Kindergarten and 1st grade for all racial/ethnic groups – when it's most important for long-term foundation.
- Cost to students, schools, & state = too high.

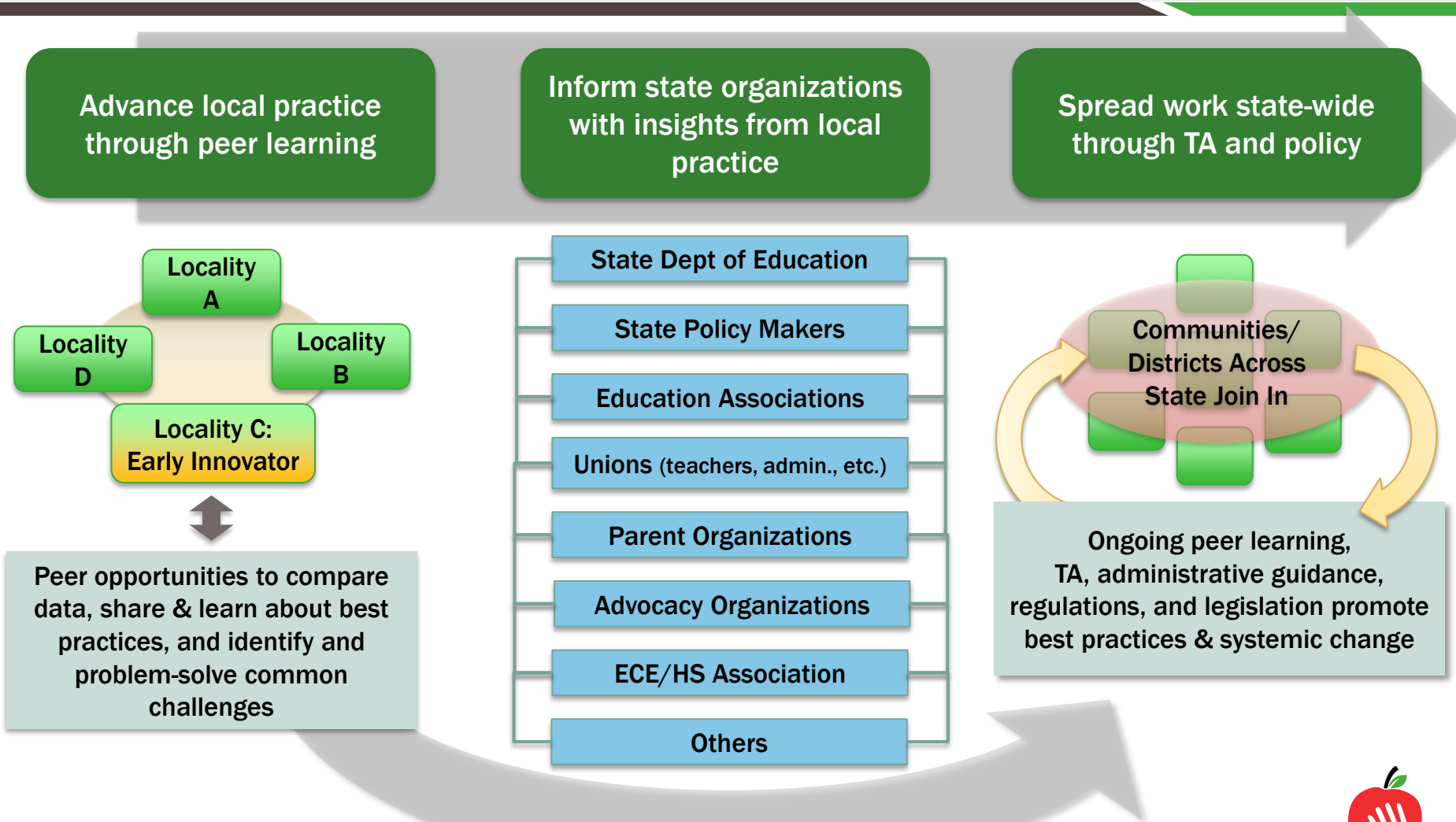
Discussion Questions

- Share an example of how you engaged with partners in unpacking the root causes behind early absenteeism.
- In every state, there are the early innovators at the local level. Can you share an example of one such community or district from your state and how they influenced your thinking?

Discussion Questions

- How can you leverage existing state initiatives to map and address the attendance gap?

Scaling Up: Proposed Local to State Pathway



To learn more about these states:

- Read the state profiles in *Mapping the Early Attendance Gap* brief:
<http://www.attendanceworks.org/research/mapping-the-gap/>
- Check out the state profile pages on the Attendance Works website:
 - **California:** <http://www.attendanceworks.org/policy-advocacy/state-reports/california/>
 - **Rhode Island:** <http://www.attendanceworks.org/policy-advocacy/state/rhode-island/>
 - **Utah:** <http://www.attendanceworks.org/policy-advocacy/state-reports/utah/>

Questions?



Attendance Works

Cecelia Leong
Associate Director



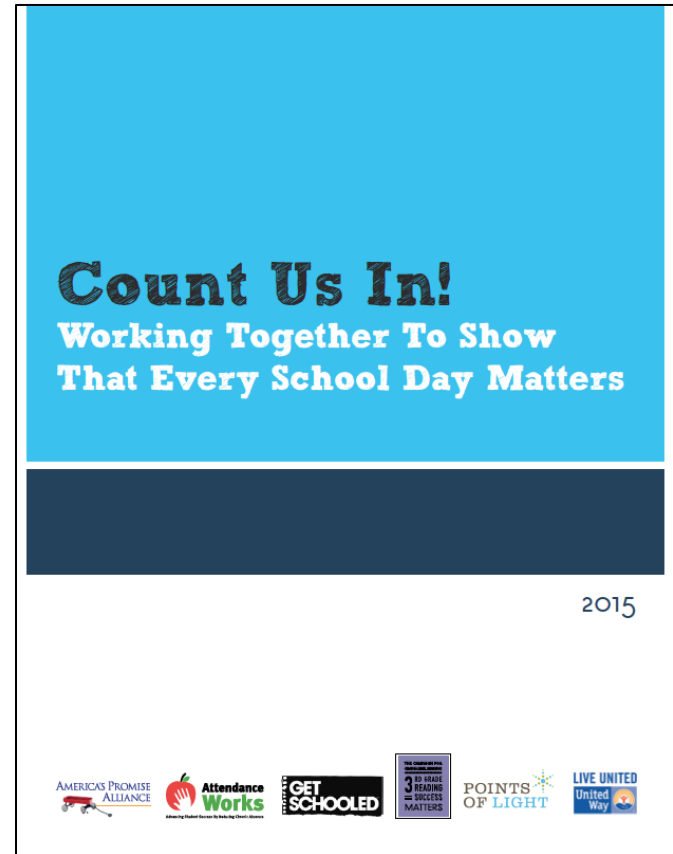
Announcements & Resources



Count Us In Toolkit

(your essential resource!)

- Download our free materials and toolkit and share with local districts
- Encourage schools and community partners to join our listserv: 3,500+ members



<http://awareness.attendanceworks.org/resources/toolkit/>



What to Do When

What to Do When: At a Glance



Let's get started!

- Convene coalition
- Recruit partners
- Meet with district
- Enlist health care providers
- Launch poster contests and other marketing campaigns

Early Summer

Getting into specifics

- Distribute talking points
- Enlist elected officials & celebs
- Line up incentives
- Analyze data



Late Summer

It's Go Time

- Tape PSAs
- Begin media outreach
- Print banners & posters
- Plan assemblies and Back-to-School events
- Launch door-knocking campaigns

Back to School!

- Release proclamations
- Host Back-to-School events
- Host press conferences
- Share data
- Spread the word!



Share What You Are Planning

Post your
community's plans
for Attendance
Awareness Month
2015 on our map!



<http://awareness.attendanceworks.org/map/>



Look on the Community Page

State of New York: Every Student Present



Every Student Present is a public awareness campaign designed to help school staff, parents and communities understand the impact of chronic absence—missing 10 percent of school. The goals of the campaign are to promote awareness of chronic absence and to build capacity among schools, families and communities to reduce it. For more information, visit the [Every Student Present website](#).

Waterloo, IA: Attendance Awareness video

Students need to be in school to learn. See why attendance matters here!



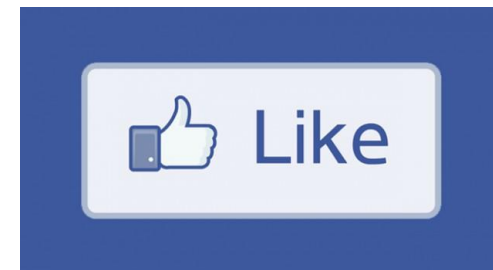
Washington, DC: Wrap-around services increase attendance

<http://awareness.attendanceworks.org/newsroom/community-news/>

Share on Social Media



#schooleveryday



<https://www.facebook.com/attendancemonth>



The Superintendents Call to Action

**Prioritize
Attendance**

**Mobilize
the
Community**

**Drive With
Data**

*To sign-up for the Call to Action, or to learn more, please visit:
www.attendanceworks.org/superintendents-call-to-action*



Superintendent's Call to Action

To sign-up for the Call to Action, or to learn more, please visit:
www.attendanceworks.org/superintendents-call-to-action

Visit the website to find:

- Updated Call to Action
- A list of Superintendents who have joined the call
- Tips for getting started
- Tips for developing a community action plan
- Toolkits and resources
- Media tools



Look for the EdWeek Ad in September



The best curriculum and instruction won't work unless students show up for school!

SUPERINTENDENTS CALL TO ACTION MISSING SCHOOL MATTERS!

As many as 7.5 million students nationwide miss nearly a month of school every year, excused and unexcused absences that erode student achievement. As superintendents, we are launching this new school year with a commitment to:

- 1. Prioritizing Attendance:** We are making reducing chronic absence a top priority in our district from the superintendent to the teachers, from the school staff to the families.
- 2. Mobilizing the Community:** We are making student attendance a broadly owned and widely shared civic priority. That includes engaging families and tapping civic and elected leaders, local businesses, health providers, housing authorities, clergy members and more.
- 3. Driving with Data:** We are using data to determine how many and which students are chronically absent in each grade, school and population. And we are intervening to ensure absences don't add up.

Note: Superintendents will be featured in an EdWeek Ad!



America's Promise Alliance



Follow the 9/11 National Day of Service on Twitter at twitter.com/911dayofservice , and on Facebook at facebook.com/911nationaldayofservice, and MyGoodDeed at twitter.com/MyGoodDeed

Mentoring Effect & Attendance Week

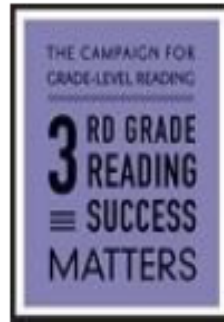
THIS IS
**MENTORING
EFFECT &
ATTENDANCE
WEEK.**

Thank your mentor for inspiring you.

SEPTEMBER 14-20, 2015

*#SCHOOLEVERYDAY
#MENTORINGEFFECT*

- Save the Date: September 15-20, 2015!
- Week is focused on amplifying the message that quality mentoring can be instrumental to attendance and academic success.
- Promotional toolkit available with social media messages, graphics and more. Download here:
http://www.mentoring.org/get_involved/campaigns_events/attendance_awareness_month/
- Join us for a Twitter chat on mentoring and attendance on Wednesday, September 16 at 3 pm ET / 12 pm PT!



Parents Are the Secret Sauce:
A Lineup of Successful Parents Webinars for GLR Communities
Fall 2015 Series

Attendance Awareness Month Special

September 30, 2015 @ 3pm ET

Getting Beyond Negative Perceptions about Parents:
Key Insights about Engaging Parents in Ending Chronic Absence

Featured Guests: Ben Chida & Jill Habig, California Department of Justice,
Office of Attorney General Kamala Harris

Register Today!

**Special thanks to all the partners
and our funders!**



Thank You for Attending!



- For more information about Attendance Awareness Month 2015, go to:
<http://awareness.attendanceworks.org/>
- A recording of today's webinar will be posted within 72 hours:
<http://www.attendanceworks.org/peer-learning-resources/>
- Please take a moment to provide feedback about today's webinar:
<https://www.surveymonkey.com/r/MappingGap>

